
		<h2>Local parking amendment</h2>	
Reference	16/17_Q1_001	Location overview	
Location	Rockingham Street		
Proposal	To Install double yellow lines adjacent to junctions with Bath Terrace, Tiverton Street and off street parking areas to improve traffic flow and access at any time. To install new permit holder bay and extend existing shared use bay.		
Community council meeting	Borough, Bankside and Walworth		
Community council date	29 June 2016		
Ward(s) affected	Chaucer		

### Local parking amendment

A local parking amendment (LPA) is small project to change an existing parking restriction or to introduce a new one.

These tend to be carried out in locations where we have had a request to look at dangerous or obstructive parking and where small lengths of restrictions could provide a solution.

### Request

On 19 January 2016 the council received a request from a resident of the Rockingham Tenants and Resident Association raising concerns about obstructive and dangerous parking on Rockingham Street.

The parking design team has been informed that a meeting has taken place with the residents association along with parking operations and police & community safety. Residents have raised concerns that parking is becoming an urgent safety issue with motorists parking dangerously and inconsiderately in Rockingham Street blocking vehicular access.

### Location

Rockingham Street is part of the Newington (D) controlled parking zone which operates Monday to Friday 8.30am – 6.30pm. It is within short walking distance to many leisure attractions.

With the parking zone effectively free and unrestricted in the evening and weekends, this allows vehicles to park on single yellow lines making the street an attractive parking location for non-residents.

### Investigation and conclusions

An officer was unable to visit this location after the CPZ operational hours but did visit this location on 17 March 2016. It was noted on the site visit that all the single yellow lines would provide an option for parking outside of CPZ operation times and that this could create an access problem for emergency vehicles.

The highway width in Rockingham Street varies between 7.7 metres and 4.2 metres and there are certain sections in the road where double yellow lines are required to improve safety for all road users.

It was noted during the visit that there is scope to increase permit parking and to provide additional resident parking spaces.

### Further rationale for double yellow lines

- Ensuring adequate visibility between road users is important for safety. Visibility should generally be

sufficient to allow road users to see potential conflicts or dangers in the advance of the distance in which they will be able to brake and come to a stop.

- Vehicles that are parked at a junction have the effect of substantially reducing visibility between road users and reducing stopping sight distances (SSD). This is the viewable distance required for a driver to see so that they can make a complete stop before colliding with something in the street, e.g. pedestrian, cyclist or a stopped vehicle.
- It is noted that almost two thirds of cyclist killed or seriously injured in 2013 were involved in collisions at, or near, a road junction, with “T” junctions being the most commonly involved.
- Children and those in wheelchairs (whose eyelevel is below the height of a parked car) are disproportionately affected by vehicles parked too close to a junction. The Guide Dogs for the Blind Association (Guide Dogs) strongly recommend that yellow lines are implemented at junctions as these are potentially more dangerous.
- The Highway Code makes it clear that motorists must not park within 10 metres of a junction, unless in a designated parking bay. However the council has no power to enforce this without the introduction of a traffic order and subsequent implementation of waiting restrictions (yellow lines).
- The proposal to install yellow lines at this junction is in accordance with the council’s adopted Southwark Streetscape Design Manual (SSDM) design standard on Highway Visibility (DS114 – Highway Visibility)

#### **Recommendation**

Based on our investigation and conclusions, officers are recommending the replacement of single yellow lines with double yellow lines on the north and south sides of the road and at the junctions with Bath Terrace, Tiverton Street and housing estate entrances. There will be no reduction in permit holder bays as a result of this proposal.

It’s also recommended to provide new permit holders (D) bay and extend an existing shared use parking bay.

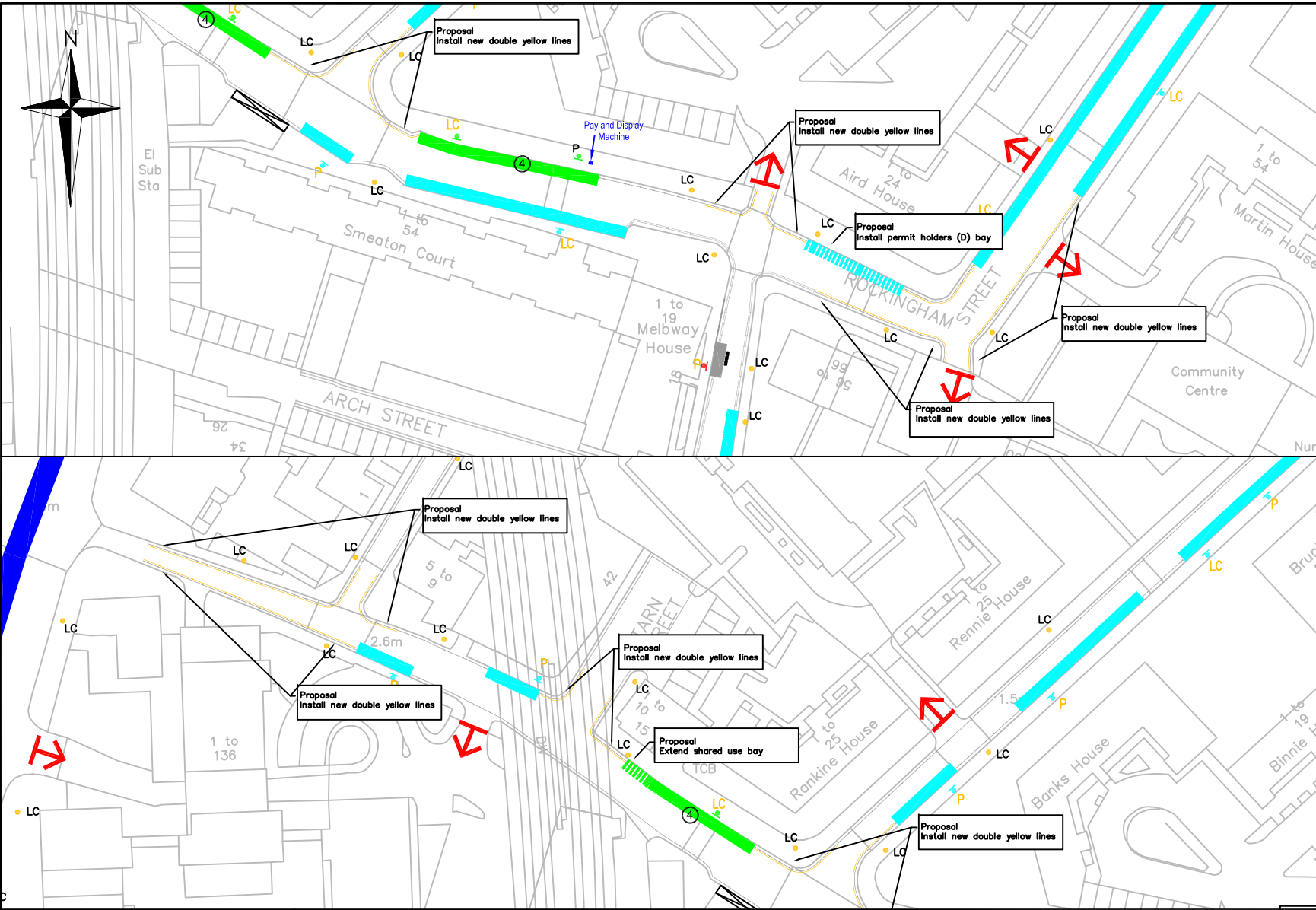
A detailed design drawing of the proposal is attached.

#### **Next steps**

Should the community council approve this local parking amendment, it is expected that statutory consultation will commence in August 2016.

Following the statutory consultation period, the council will make arrangements to install the restrictions (road marking and signage at the location).

Should objections be received during the statutory consultation period, these will be presented at the next community council meeting for determination.



**Legend**

	Proposed double yellow lines
	Existing double red line
	Existing single red line
	Existing double yellow lines
	Existing single yellow line
	Existing permit holders only
	Existing shared use

**Highways  
Parking Design**

Environment and Leisure  
Floor 3, hub 1  
Southwark Council  
160 Tooley Street  
PO Box 64529  
London, SE1P 5LX

[www.southwark.gov.uk/parkingprojects](http://www.southwark.gov.uk/parkingprojects)



**Project**  
1617 LOCAL PARKING AMENDMENT

**Drawing Title**  
ROCKINGHAM STREET  
PROPOSED DOUBLE YELLOW LINES

Community Council BOROUGH, BANKSIDE AND WALWORTH				
Ward(s) CHAUCER				
Date	Scale	Drn	Chk	App
15/03/16	1:1000@A4	MH	PG	PG
Dwg No.	1617Q1001			Rev
Status	DETAILED DESIGN			A

Rev	Date	Description	Drn	Chk	App